

FASTENERS FOR THE FAST-PACED WORLD

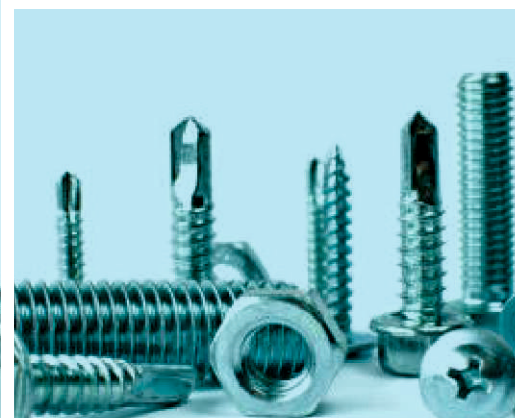


**MANUFACTURER &
STOCKIST OF FASTENERS**

June 2024

Content

- 03** About Us
- 04** Our Mission
- 05** Material Grades
- 06** Bolts
- 08** Nuts
- 10** Washers
- 11** Screws
- 12** Trading Partners
- 13** Superior Logistics
- 14** Quality Assurance
- 15** Our Customer & Export



About Us

Dinesh Steel & Alloys is steadfast in assisting clients as a premier fastener supplier and manufacturer. With a track record of serving over 36,000 clients, we prioritize quality, reliability, and personalized support. Our commitment extends beyond products; we focus on exceeding customer expectations, ensuring timely delivery, and providing tailored solutions to meet diverse industrial needs, fostering long-term partnerships built on trust and satisfaction.

Certification

ISO: 9001: 2015/ ISO 14001: 2015/ PED 97/ 23/ EC

Our Standards

DIN/ ISO/ ASTM/ BSI/ JIS



Since 2011
Dinesh Steel & Alloys
Helping Clients.

Our Mission

Since our inception in 2011, Dinesh Steel & Alloys has been dedicated to delivering unparalleled quality and service in the fasteners industry. As a trusted manufacturer and stockist, we have proudly served over 36,000 customers, each relying on our commitment to excellence for their critical applications.

Our Mission is clear:

To Provide Superior Fastening Solutions

We strive to offer the highest quality fasteners, manufactured with precision and care, to meet the diverse needs of our customers. By utilizing the best raw materials and advanced manufacturing processes, we ensure that every product we deliver is reliable, durable, and capable of withstanding the most demanding conditions.

To Foster Long-Term Relationships

Customer satisfaction is at the heart of our mission. We aim to build lasting relationships with our clients by consistently exceeding their expectations. Our dedicated team works tirelessly to understand and fulfill the unique requirements of each customer, providing personalized solutions and exceptional service.

To Innovate and Improve Continuously

In a rapidly evolving industry, we are committed to staying at the forefront of technological advancements and industry standards. Our mission includes a relentless pursuit of innovation and continuous improvement, ensuring that our products and processes remain cutting-edge and efficient.

To Uphold Integrity and Transparency

Integrity and transparency are the cornerstones of our business practices. We believe in conducting our operations with the utmost honesty, providing clear and accurate information to our customers. Our commitment to ethical practices ensures that our clients can trust us as their reliable partner in the fasteners industry.

To Contribute to a Sustainable Future

We recognize the importance of sustainability and are dedicated to minimizing our environmental impact. Our mission includes adopting eco-friendly practices and materials, promoting sustainability throughout our operations, and contributing to a greener future for generations to come.

At Dinesh Steel & Alloys, our mission drives us to deliver excellence in every fastener we produce and every service we provide. We are committed to being your trusted partner, offering high-quality fastening solutions that empower your success.

Material Grades

Stainless Steel:

304, 316, 304L, 316L,
A2-70, A2, A4-70, A4-80,
B8, B8M, 18-8, 310, 321, 347, 410, 416, 420, 430, 431,
440A, 440B, 440C, 2205, 2507, 17-4
PH, 15-5 PH, 13-8 MO, 904L, 254SMO, 405, 409, 444.

High Tensile:

8.8, 10.9, 12.9, 14.9, 5.6, 6.8, 9.8,
ASTM A193 Grade B7, L7, ASTM A325, ASTM A490, 2H, ASTM F3125
Grade A325, ASTM F3125 Grade A490, 10S,
B16, L43, BC, BD, ASTM A490, ASTM A325,
Grade 105, Grade 50, ASTM A588, ASTM A514

Titanium: Grade: 1, 2, 3, 4, 5, 7, 12, 23, 16, 18, 19, 25, 26, 28.

Customised: These fasteners are Customized to meet the exact requirements of a particular application. This includes dimensions, material specifications, thread types, and other specific features as per the drawing.

Length: upto 4000MM | **Dia:** 3 to 1000MM | **Standard:** DIN, ASTM, ISO, BSI,



Coatings: PTFE, Zinc Plating, Nickel Plating, Geomet, HOT DIP Galvanise.

Stainless Steel Product Range of Bolts



Hex Bolt

Size Range: M3 - M100
Grade: A2-50 / 70 / 80 &
A4-50 / 70 / 80
Standard: ISO 4017



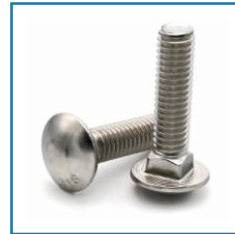
Allen Bolt

Size Range: M1.6 to M64
Grade: A2-50 / 70 / 80 &
A4-50 / 70 / 80
Standard: ISO 4762



Counter Sunk Bolt

Size Range: M3 - M20
Grade: A2, A4
Standard: ISO 10642



Carriage Bolt

Size Range: M5 - M24
Grade: A2-70, A4-70
Standard: ISO 8678



Eye Bolt

Size Range: M6 - M100
Grade: A2, A4
Standard: ISO 3266



Dome Bolt

Size Range: M3 - M20
Grade: A2, A4
Std: as per DSA Specification



Foundation Bolt

Size Range: M6 - M100
Grade: A2, A4
Std: as per DSA Specification



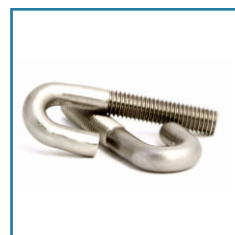
Half Threaded Bolt

Size Range: M3 - M100
Grade: A2, A4
Standard: ISO 4014



Stud Bolt

Size Range: M5 - M24
Grade: A2-70, A4-70,
B8, B8M
Standard: DIN 975



J Bolt

Size Range: M6 - M100
Grade: A2, A4
Std: as per DSA Specification

Stainless Steel Product Range of Bolts



Shoulder Bolt

Size Range: M3 - M20
Grade: A2, A4
Std: as per DSA Specification



T Bolt

Size Range: M3 - M20
Grade: A2-70, A4-70
Std: as per DSA Specification



U Bolt

Size Range: M5 - M36
Grade: A2-70, A4-70
Standard: DIN 3570



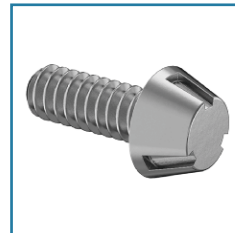
Weld Stud

Size Range: M3 - M20
Grade: A2-70, A4-70
Standard: ISO 13918



Flange Bolt

Size Range: M3 - M100
Grade: A2-70, A4-70
Standard: ISO 4162



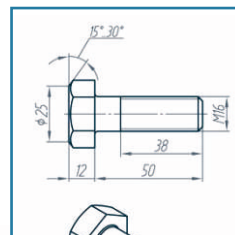
Anti-Theft Bolt

Size Range: M6 - M16
Grade: A2, A4
Std: as per DSA Specification



Solid Rivets

Size Range: M6 - M16
Grade: A2, A4
Standard: DIN 660



Customised Bolt

Size Range: M6 - M200
Grade: A2, A4
Std: as per DSA Specification



Stainless Steel Product Range of Nuts



Hex Nut

Size Range: M3 - M100
Grade: A2-50 / 70 / 80 &
A4-50 / 70 / 80
Standard: ISO 4017



Lock Nut

Size Range: M1.6 to M64
Grade: A2-50 / 70 / 80 &
A4-50 / 70 / 80
Standard: ISO 4762



Nylock Nut

Size Range: M3 - M20
Grade: A2, A4
Standard: ISO 10642



Flange Nut

Size Range: M5 - M24
Grade: A2-70, A4-70
Standard: ISO 8678



Dome Nut

Size Range: M5 - M100
Grade: A2, A4
Standard: ISO 3266



Anti-Theft Nut

Size Range: M3 - M20
Grade: A2, A4
Std: as per DSA Specification



Cage Nut

Size Range: M10 - M100
Grade: A2, A4
Std: as per DSA Specification



Castle Nut

Size Range: M3 - M100
Grade: A2, A4
Standard: ISO 4014



Clinch Nut

Size Range: M5 - M24
Grade: A2-70, A4-70,
B8, B8M
Standard: DIN 975



Insert Nut

Size Range: M6 - M100
Grade: A2, A4
Std: as per DSA Specification

Stainless Steel Product Range of Nuts



Long Nut

Size Range: M3 - M100
Grade: A2-50 / 70 / 80 &
A4-50 / 70 / 80
Standard: ISO 4017



Spring Nut

Size Range: M1.6 to M64
Grade: A2-50 / 70 / 80 &
A4-50 / 70 / 80
Standard: ISO 4762



Square Nut

Size Range: M3 - M20
Grade: A2, A4
Standard: ISO 10642



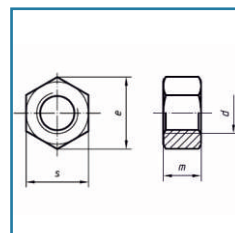
Weld Nut

Size Range: M5 - M24
Grade: A2-70, A4-70
Standard: ISO 8678



Wing Nut

Size Range: M6 - M100
Grade: A2, A4
Standard: ISO 3266



Customised Nuts

Size Range: M5 - M200
Grade: A2-70, A4-70
Standard: as per specification



Stainless Steel Product Range of Washers



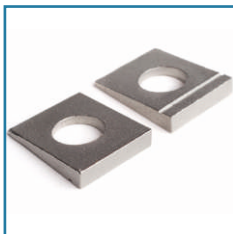
Plain Washer

Size Range: M3 - M100
Grade: A2-50 / 70 / 80 &
A4-50 / 70 / 80
Standard: ISO 4017



Spring Washer

Size Range: M1.6 to M64
Grade: A2-50 / 70 / 80 &
A4-50 / 70 / 80
Standard: ISO 4762



Tapper Washer

Size Range: M3 - M20
Grade: A2, A4
Standard: ISO 10642



Disc Spring Washer

Size Range: M5 - M24
Grade: A2-70, A4-70
Standard: ISO 8678



Tooth Washer

Size Range: M4 - M100
Grade: A2, A4
Standard: ISO 3266



Tab Washer

Size Range: M3 - M20
Grade: A2, A4
Std: as per DSA Specification



Large Washer

Size Range: M4 - M100
Grade: A2, A4
Std: as per DSA Specification



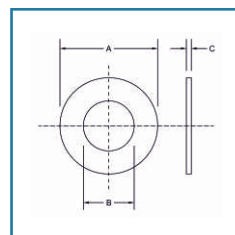
Serrated Washer

Size Range: M3 - M100
Grade: A2, A4
Standard: ISO 4014



Nord Lock Washer

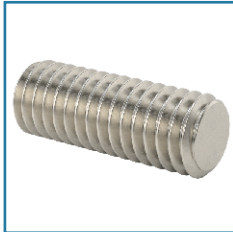
Size Range: M5 - M24
Grade: A2-70, A4-70,
B8, B8M
Standard: DIN 975



Customised Washers

Size Range: M3 - M200
Grade: A2, A4
Standard: as per specification

Stainless Steel Product Range of Screws



Grub Screw

Size Range: M3 - M20
Grade: A2, A4
Standard: DIN 913,
DIN 915



Pan Head Screw

Size Range: M3 - M20
Grade: A2, A4
Standard: DIN 7985



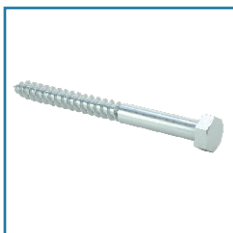
Cheese Head Screw

Size Range: M3 - M20
Grade: A2, A4
Standard: DIN 84A



Self Drill Screw

Size Range: M3 - M20
Grade: A2, A4
Standard: DIN 7504



Coach Screw

Size Range: M3 - M20
Grade: A2, A4
Standard: DIN 571



Self Tapping Screw

Size Range: M3 - M20
Grade: A2, A4
Standard: DIN 7970



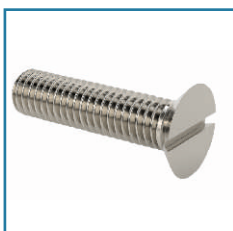
Truss Head Screw

Size Range: M3 - M20
Grade: A2, A4
Std: As Per DSA Specification



Wood Screw

Size Range: M3 - M20
Grade: A2, A4
Std: As Per DSA Specification



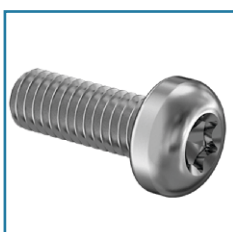
CSK Slotted Screw

Size Range: M3 - M20
Grade: A2, A4
Standard: DIN 963



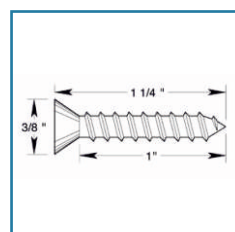
Button Head Screw

Size Range: M3 - M20
Grade: A2, A4
Standard: DIN 7380



Star Head Screw

Size Range: M3 - M20
Grade: A2, A4
Std: As Per DSA Specification



Customised Screws

Size Range: M3 - M20
Grade: A2, A4
Standard: as per specification

Overview

of Dinesh Steel & Alloys Departments



Fasteners Manufacturing

The Fasteners Manufacturing department is at the core of Dinesh Steel & Alloys' operations, specializing in the production of high-quality fasteners. They utilize advanced manufacturing technologies and rigorous quality control processes to produce a wide range of fasteners, including bolts, nuts, screws, and washers. This department is dedicated to meeting both standard and custom fastener requirements, ensuring durability, precision, and compliance with industry standards.

Project Supplier

Dinesh Steel & Alloys is a comprehensive project supplier, offering a wide range of industrial products. They cater to various industries, providing everything from basic tools to specialized machinery and equipment. Their goal is to ensure that clients have access to all the necessary components for their projects, making them a one-stop shop for industrial needs.

Export

The Export department of Dinesh Steel & Alloys focuses on delivering high-quality fasteners to international markets. With a robust logistics network and adherence to global standards, they ensure that their products reach customers worldwide efficiently and reliably. Their export operations help in establishing a global footprint and meeting the fastener needs of clients across different countries.

Customized Products

In the Customized Products department, Dinesh Steel & Alloys excels in manufacturing tailored products to meet specific project requirements. They work closely with clients to understand their unique needs and deliver custom solutions. Whether it's a unique fastener design or a specialized component, this department is equipped to handle diverse customization requests, ensuring precision and quality in every product.

Tender

The Tender department is dedicated to supplying materials for government projects through tenders. By participating in and winning tenders, Dinesh Steel & Alloys ensures a steady supply of materials for various government initiatives. This department is pivotal in supporting infrastructure and development projects, adhering to regulatory standards, and ensuring timely delivery of quality products.

Trading Partners



Superior Inventory Management & Logistics

At Dinesh Steel & Alloys, we excel in both inventory management and logistics, ensuring that our high-quality fasteners are always available and delivered to you promptly. Here's how we set the standard in the industry:

Robust Inventory Management:

Real-Time Inventory Tracking: Leveraging cutting-edge technology, we maintain up-to-date inventory levels to prevent shortages and overstocking. This ensures we can quickly meet your demands without delays.

Efficient Stock Management: Our meticulous organization of inventory maximizes storage space and enhances operational efficiency, allowing for quick and accurate order fulfillment.

Demand Forecasting: By analyzing historical data and market trends, we predict future demand accurately, ensuring we always have the right products in stock.

Quality Control: Each batch of fasteners undergoes rigorous quality checks, guaranteeing that only the best products reach you.

Efficient Logistics & Distribution

Strategic Warehousing: Our strategically located warehouses minimize delivery times, ensuring rapid fulfillment of your orders.

Extensive Distribution Network: Partnering with reliable logistics providers, we deliver your fasteners locally, nationally, and internationally with precision and care.

Real-Time Order Tracking: Offering transparency, our real-time tracking allows you to monitor your shipment from our warehouse to your doorstep, providing peace of mind.

Customized Delivery Solutions: We offer tailored delivery options, including just-in-time deliveries and bulk shipments, to meet your specific project needs.

Advanced Technology Integration: Our logistics processes are optimized through advanced technology, ensuring seamless coordination and minimizing errors and transit times.

Environmentally Conscious Practices: Committed to sustainability, we optimize routes, use energy-efficient transportation, and reduce packaging waste.

Dedicated Customer Support: Our customer support team ensures a smooth experience from order placement to delivery, addressing any concerns promptly. Choose Dinesh Steel & Alloys for unparalleled inventory management and efficient logistics and distribution. Our comprehensive capabilities ensure that you receive high-quality fasteners exactly when you need them, keeping your projects on track.



Quality Assurance:

At Dinesh Steel & Alloys, we pride ourselves on our unwavering commitment to quality assurance. As a leading manufacturer and stockist of high-grade fasteners, our dedication to excellence is evident in every aspect of our operations. We recognize that the reliability of our fasteners is paramount to the safety and success of our clients' projects, which is why we leave no stone unturned in our quest for perfection.

Premium Raw Materials

Our journey towards exceptional quality begins with the careful selection of raw materials. We source only the finest materials from trusted suppliers, ensuring that every component meets our stringent criteria for strength, durability, and consistency. This meticulous attention to detail sets the foundation for the superior performance of our fasteners.

Advanced Manufacturing Techniques

Utilizing cutting-edge manufacturing techniques, we transform these premium raw materials into high-quality fasteners. Our state-of-the-art facilities are equipped with the latest technology, allowing us to maintain precise control over every step of the production process. From forging and machining to heat treatment and surface finishing, each fastener is crafted to exact specifications.

Rigorous Quality Control

Quality assurance at Dinesh Steel & Alloys is not a single step but a continuous process. Our dedicated quality control team conducts rigorous inspections and tests at every stage of production. This includes:

- **Mechanical Testing:** Assessing tensile strength, hardness, and impact resistance to ensure our fasteners can withstand the most demanding applications.
- **Chemical Analysis:** Verifying the composition of materials to guarantee conformity with industry standards such as ISO, ASTM, and DIN.
- **Non-Destructive Testing (NDT):** Employing advanced techniques like ultrasonic testing and radiographic inspection to detect any internal flaws without damaging the product.

Documentation and Traceability

Transparency and accountability are integral to our quality assurance process. We maintain meticulous records and documentation for every product, providing full traceability from raw material to finished fastener. This ensures that our clients receive products that not only meet but exceed their expectations.

Commitment to Continuous Improvement

We are dedicated to continuous improvement, constantly refining our processes and investing in new technologies to enhance our quality assurance practices. Our goal is to stay ahead of industry advancements and deliver products that set the benchmark for quality in the fastener industry.

Our Customers



EXPORTING IN ALL OVER WORLD





DINESH STEEL & ALLOYS

Dinesh House, Opp. Geb Office,

Lehripura New Road, Vadodara 390001, Gujarat, India.

Mobile: +91 97144-41905, 76006-25472, 99241-12253

E-mail: Sales@dineshbolts.com | dineshsteelalloys@gmail.com

Website: dineshbolts.com

FASTENERS FOR THE FAST-PACED WORLD

scan the code for
visit our website

